

# DOCTRINE OF SIGNATURES

## Human tissue vs. Herbal structure

**Karin van Huelsen, ND**

*“Rather than discover new, isolated facts I preferred linking already known ones together.”*

*“Science could only advance by bringing together all the phenomena and creations which the earth has to offer. In this great sequence of cause and effect, nothing can be considered in isolation.”*

*Alexander von Humboldt 1769-1859*

The doctrine of Signatures is a philosophy shared by herbalists from the time of Dioscurides and Galen. This doctrine states that herbs that resemble various parts of the body can be used to treat ailments of that part of the body.

Compared are the appearance and texture of human tissue in relation to herbal characteristics and their medical application as a remedy. Differences of their sizes between plant and human organ are not relevant. Main issue is to compare structure and color.

There will not be a total remedy description. I refer to the homeopathic materia medica and to Dr. Kessler's e-book on Homeopathy. (see list of references)



## Table of Contents

1. [ABROTANUM \(ARTEMISIA ABROTANUM\)](#)
2. [ADONIS VERNALIS](#)
3. [AGNUS CASTUS](#)
4. [AILANTHUS GLANDULOSA](#)
5. [ARUM MACULATUM](#)
6. [ASARUM EUROPAEUM](#)
7. [BAMBUSA ARUNDIACEA](#)
8. [BELLADONNA](#)
9. [BERBERIS AQUIFOLIA ET VULGARIS](#)
10. [CACTUS GRANDIFLORUS](#)
11. [CALCEOLARIA TRIPARTITA](#)
12. [CARDUUS MARIANUS](#)
13. [CETRARIA ISLANDICA](#)
14. [CHELIDONIUM MAJUS](#)
15. [CLEMATIS RECTA](#)
16. [CONIUM MACULATUM](#)
17. [CROTALUS HORRIDUS](#)
18. [CUCURBITA PEPO](#)
19. [CYPRIPEDIUM PUBESCENS](#)
20. [DIGITALIS PURPUREA](#)
21. [DIPSACUS SYLVESTRIS](#)
22. [DROSELA ROTUNDIFOLIA](#)
23. [EQUISETUM HIEMALE](#)
24. [EUCALYPTUS GLOBULUS](#)
25. [EUPATORIUM PURPUREUM](#)
26. [GINKGO BILOBA](#)
27. [HAMEMELIS VIRGINICA](#)
28. [HEDERA HELIX](#)
29. [HERACLEUM MANTEGAZZIANUM SOMM.](#)
30. [JUGLANS REGIA](#)
31. [LEONURUS CARDIACA](#)
32. [PHASEOLUS NANUS / VULGARIS](#)
33. [POLYPORUS PINICOLA](#)
34. [QUILLAJA SAPONARIA](#)
35. [RICINUS COMMUNIS](#)
36. [RUTA GRAVEOLENS](#)
37. [SEMPERVIVUM TECTORUM](#)
38. [STICTA PULMONARIA](#)
39. [SWEET POTATO](#)
40. [SYZYGIIUM JAMBOLANA](#)
41. [THUJA OCCIDENTALIS / ORIENTALIS](#)
42. [URTICA URENS / URTICA DIOICA](#)



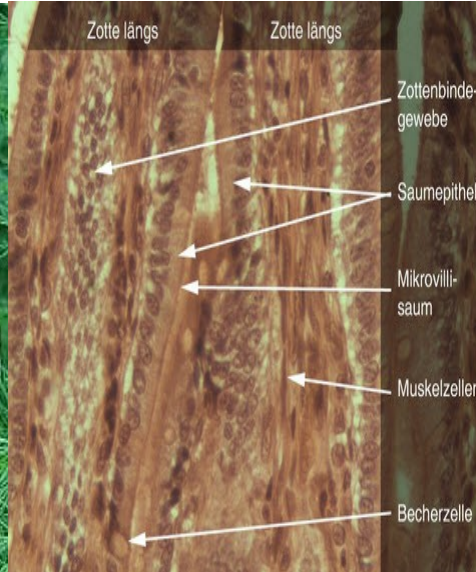
## ABROTANUM (ARTEMISIA ABROTANUM)

(Southernwood)

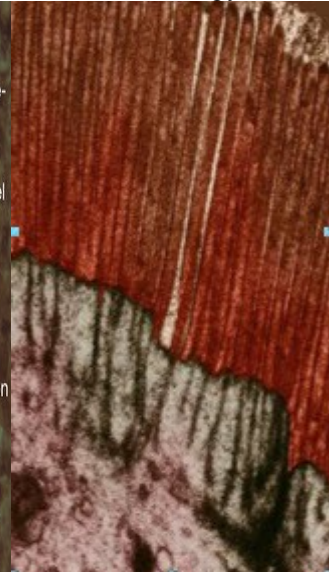
Southernwood



Microvilli



Electron microscopy



Food passes undigested.

Profound dyspepsia with abnormal increased appetite.

Alternating diarrhea and constipation. Bloating. Hard abdominal lumps. Atonic and decreasing intestinal feeling. Colitis



## ADONIS VERNALIS

(Spring pheasant's eye)

Heart valve



Adonis aestivalis (Summer pheasant's eye)



Valvular heart defect/cardiac insufficiency.

Nervous heart complaint, heart rhythm disturbances, extrasystolia, myocardial damage, heart edema, rheumatic endocarditis.

Other similarities between

organ (heart)

and

plant (Adonis vernalis):

Digitalis medication

outstanding alternative remedy for digitalis, reacting accumulative and much faster.

Valvular heart insufficiency

as soon as the sun disappears behind the clouds, the petal fold together, once the life span of the Adonis flower almost ended, the flower can not close itself all the way.

Rhythmic disturbances

irregular moving pinnate leaves.



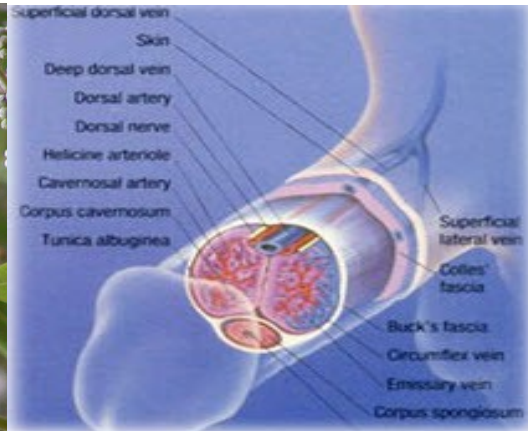
## AGNUS CASTUS

(Monk's pepper)

Flower



Penis



Marked affinity to sexual organs.

Abated sexual vitality. Effective on both genders, but especially men.

Recurring gonorrhoea.

Yellow secret from urethra. No erection. Impotency.

Genital area cold and atonic. Lack of desire. Scanty sperm secretion without ejaculation.





## **AILANTHUS GLANDULOSA**

(Tree of Heaven)

Microvilli intestine



Ailanthus glandulosa seeds



Irritation of the mucous membrane, gastrointestinal manifestation.

Watery defecation with colic, bloody bowel movement.

The bark of the Tree of Heaven is used against diarrhea and dysentery.

Other similarities between

organ (intestine)

and

plant (Ailanthus):

Resorption of water

withdrawal of moisture from the soil that is why the plant is cultivated in swampy areas.

Adenoid tissue

adenoid teeth of pinnate leaves, which secrete sugar.

Putrescence odor

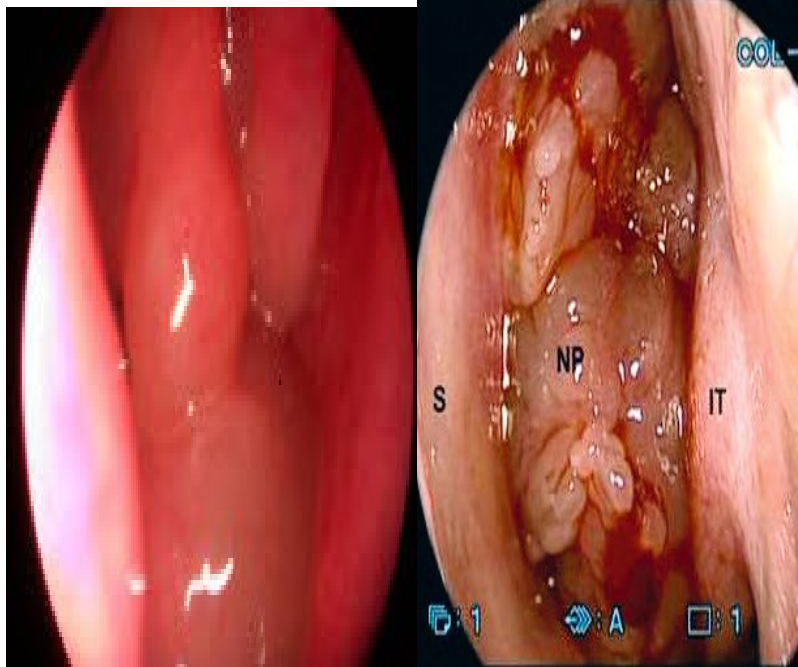
especially the male blossom secrete an unpleasant, heavy odor, during the fresh state of greenish/brown color.



## ARUM MACULATUM

(Wild arum)

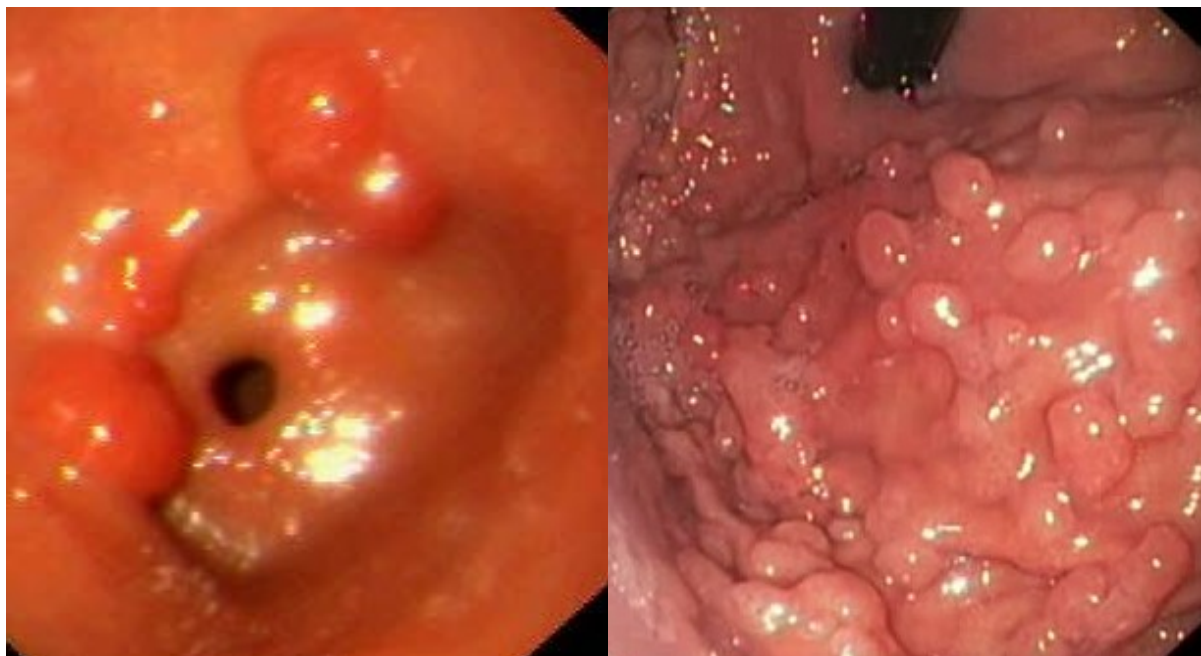
Nasal polyp



Infructescence Arum macul.



Polyp (in this case gastric mucosa), for discussion if Arum maculatum might be indicated for intestinal polyps.



Nasal polyps, uvula swelling, mucous membrane affection/inflammation, mucosa ulceration, anal prolapse. Bulbar syndrome.



## **ASARUM EUROPAEUM**

(Haselwort)

Kidney



Asarum europaeum leaf



Kidney damage with prior increase diuresis with constant strangury.  
Hyperemia especially of kidney and uterus. Renal colic.





# BAMBUSA ARUNDIACEA

(Bamboo)

Vertebra



Bamboo



To treat herniated disc. Effects joints, activates collagen synthesis in bone and connective tissue.

Stimulates rebuilding damaged cartilage. Muscle hardening. Acampsia. Back pain, which proceeds from bottom to top.

Other similarities between

organ (intestine)

and

plant (Bamboo):

Osseous

grass, stalk has due to chert the tendency to lignify, getting adamant, but stay elastic.

Carrier

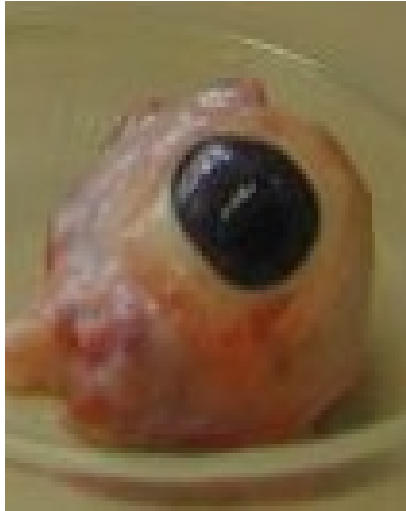
under the heavy weight of snow it has an arched decline, but will resist.



## BELLADONNA

(Deadly Nightshade – Atropa Belladonna)

Eyeball



Mydriasis



Atropa Belladonna



Feeling, as if the eyeball is pressed out of its socket. Inflamed, reddened conjunctiva, inflamed eyelid, retinal hemorrhage, dry eye tissue, seeing flashes of light (sparks), double vision, night blindness. Fixed eyes. Dropped eyelid. Everted or bleeding eyelid.

Other similarities between

organ (eye)

and

plant (Belladonna):

Mydriasis

the deadly nightshade shines as coated with varnish.

Sympathicotonic

used for atropin production



## **BERBERIS AQUIFOLIA ET VULGARIS**

(Mahonia/European barberry)

European barberry



Mahonia



Acute/stabbing character. Stinging pain in the gallbladder area. Pain knife-like stabbing pain in the liver. Stinging kidney pain.



## CACTUS GRANDIFLORUS

(Queen of the night/*Selenicereus grandiflorus*)

Intestinal loop



Cactus grandiflorus



Theme: „constriction“, tightness for example in the abdomen, intestine or especially in the heart area. Dyspragia arteriosclerotica intestinalis (Angina abdominalis/intestinalis).

Other similarities between

organ (colon)

and

plant (*Cactus grandiflorus*):

Water resorbtion

absorbtion of water





**CALCEOLARIA TRIPARTITA**

(Slipper flower)

Syphilis Stage I

Calceolaria



Flower appears naturally in orange or yellow color spectrum. Syphilis. Antibacterial effect.

**CARDUUS MARIANUS**

(Milk thistle)

Macrophage



Milk thistle



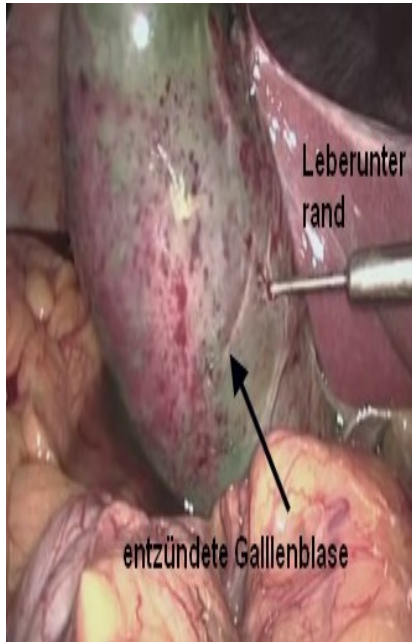
Electron microscopy of Kupffer cell



Milk thistle caulis (leaf)



Gallbladder



Seed head of Milk thistle



Protective and curative therapy of the liver. Hepatitis. Cirrhosis of the liver.  
 The plant has the healing power to build new liver cells.  
 Cholangitis/bile congestion

Other similarities between

organ (liver)

and

plant (*Carduus marianus*)

Task of Kupffer cells:  
 capture toxins, bacteria,  
 erythrocytes etc.

Antidote in case of poisoning/intoxication  
 with death cap

Liver protection

Remedy Silymarin/Silibinin

Leading symptom of *Carduus mar.*

plant acts diaphoretic  
 During meals: perspiration on forehead and spine





# CETRARIA ISLANDICA

(Iceland moss)

Lung



Iceland moss



Antibiotic effect. Inflamed tissue of air passages. Cough, whooping cough, bronchitis, asthma, emphysema. To expectorate. Bloody expectoration of any kind.

Other similarities between

organ (lung)

and

plant (*Cetraria islandica*):

Intolerance of exhaust fumes

This lichen does not grow in city or industrial areas, sulfur dioxide and hydrofluoric acid are harmful for this plant.

Bronchial tree

forked, antlered habit

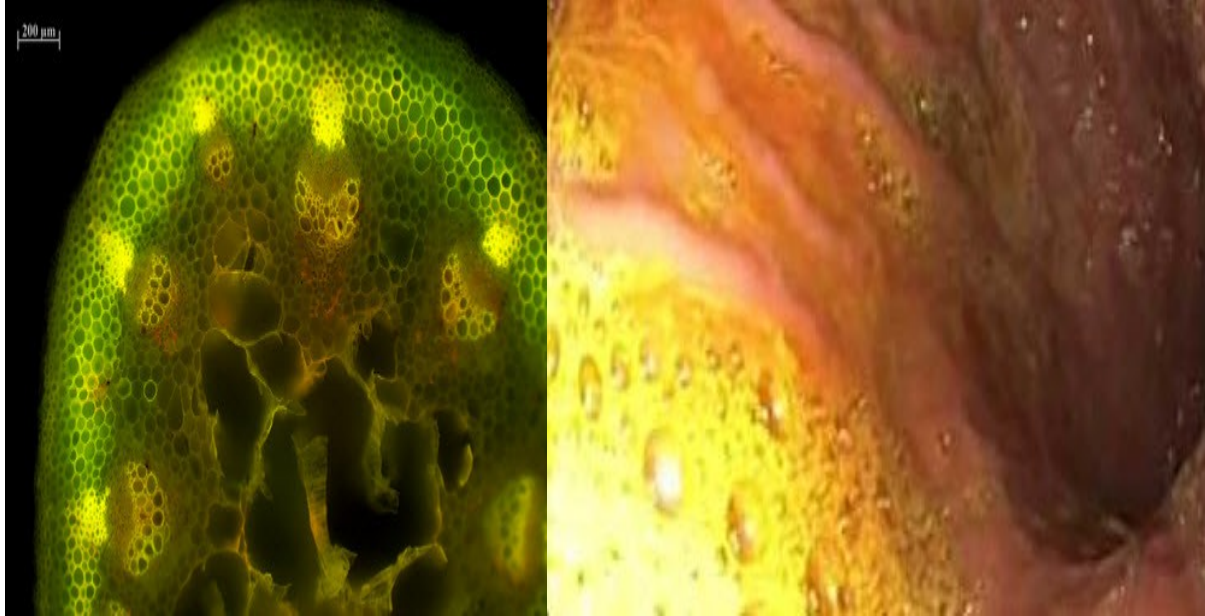




## CHELIDONIUM MAJUS

(Greater celandine)

Microscopy yellow fluid from chelidonium stipe bile reflux gastritis



Jaundice due to gallbladder occlusion.

Biliary colic.

Enlarged liver. Gallstone.

Bitter taste.

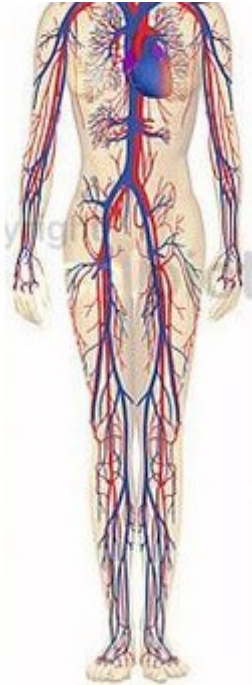
Light-colored, mud-like, doughy stool. Stool floats in water.

The yellow sap of the stipe resembles the bile.



**CLEMATIS RECTA**  
(Ground virginsbower)

Vascular system



Clematis (liana)



withered Clematis



Varices, especially with simultaneous varicose eczema. Venous stasis. Prominent veins on lower legs. Formation of plenty, prominent and densely anastomosed veins. Locally pulsating of blood vessels though the whole body.

Other similarities between

organ (vascular system) and plant (Cetraria islandica):

Capillary system passage way, tube like caulis



## CONIUM MACULATUM

(Poison Hemlock)

Peripheral artery occlusive disease



Conium maculatum



Peripheral artery occlusive disease (PAOD), diabetic gangrene.





## **CROTALUS HORRIDUS**

(Timber rattlesnake)

North American rattlesnake



Hemorrhagic diathesis



Hemorrhage (dark blood, which does not coagulate).

Hemorrhagic diathesis.

Disorganization of blood. Disintegration of blood.

Injection of Crotalin reduces the ability for blood coagulation.

To reabsorb intraocular bleeding, into the vitreous body, especially for non inflammatory retina bleeding.

Blood trickle out of the ears.

Nosebleed, black, ropy.

Tongue cancer with bleeding.

Regurgitation of blood. Coffee grounds like.

Intestinal bleeding, dark, liquid, not coagulable.

Blood is dripping from rectum during standing and walking.

Dark, bloody urine.

Uterus bleeding,

Bloody throw-off. Bloody perspiration.

Purpura haemorrhagica. Purpura rheumatica

Bleedings from every part of the body.

Purplish, spotted skin.





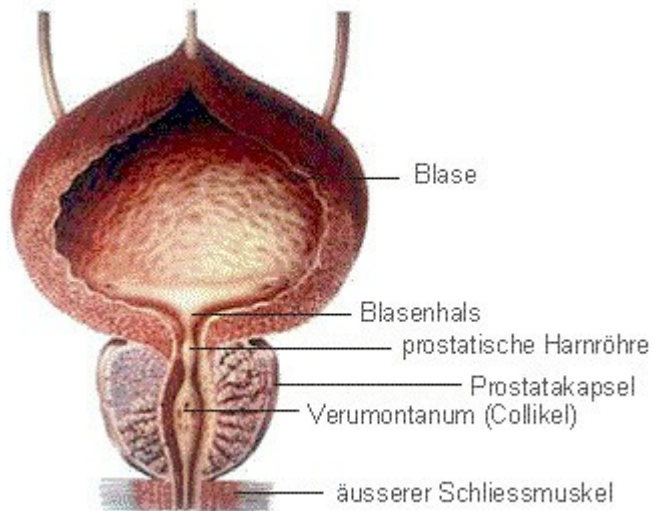
## CUCURBITA PEPO

(Pumpkin)

Pumpkin



Bladder-Prostate



Dysfunction of prostate, bladder and kidney.

Pumpkinseed have a diuretic effect. They strengthen the bladder muscle and have a decongestant effect on the prostate.

This effect has been analysed in several clinical studies.

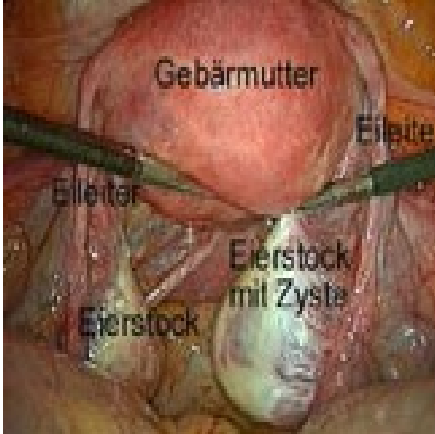
Urination disorder with prostatic hypertrophy. Prostate Adenoma. Micturition disorder, intermittent urinary flow, weakness of bladder sphincter. Enuresis, irritated bladder.



**CYPRIPEDIUM PUBESCENS**

(Lady's slipper)

Ovary



Lady's slipper

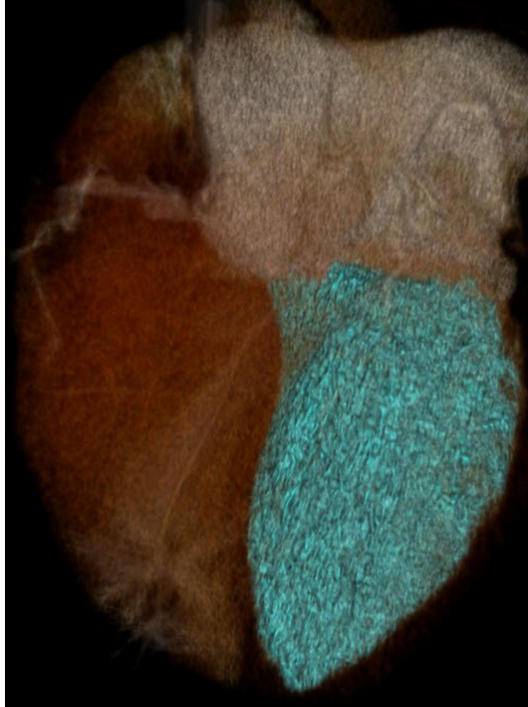


Overexcited women during pregnancy and after childbirth. Hysteria. Amenorrhoea.

## DIGITALIS PURPUREA

(Purple foxglove)

Heart ventricle (left) CT



Foxglove



Cardiac insufficiency, heart failure.

Pulse dysfunction (main symptom: explicit slow pulse, alternating with increasing and irregular intermittent frequency). Mitral valve insufficiency. Atrial fibrillation.

Wasting, petrified anxiety, heavy nausea, dyspnea and cyanosis.

Congestive heart symptoms. Strengthens the heart muscle and the contraction. Dropsy. Anti-hypertensive.

Blood pressure reducing.

Remarkable is that the respiration is getting weaker during falling asleep, patient awakes with gasping for breath and can not go back to sleep.

Diuretic.

Digitoxin used also in conventional medicine.



## DIPSACUS SYLVESTRIS/FULLONUM

(Wild teasel or fuller's teasel)

Dipsacus sylvestris/fullonum



Tic



Lyme Disease

Joint injuries, chronic muscle inflammation, gout, arthritis, arthrosis, rheumatism.

Antibacterial, cleansing, detox, immunizing, pain relief

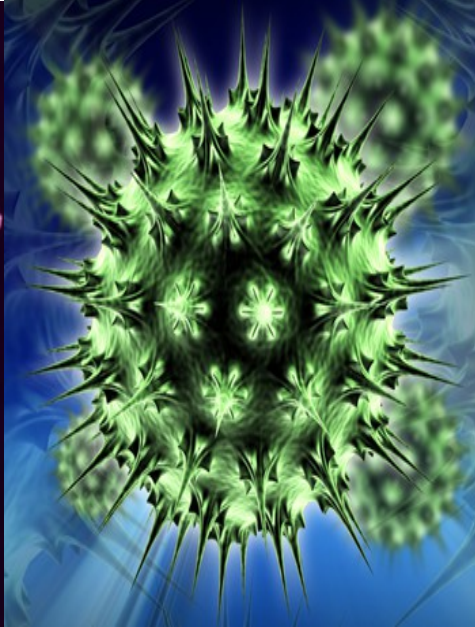
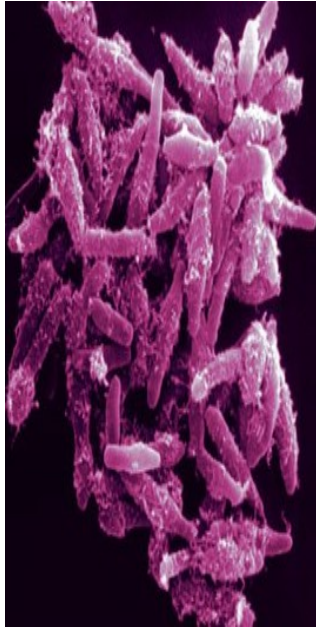




## DROSERA ROTUNDIFOLIA

(round-leaved sundew)

Mycobacteria tuberculosis (Elektron microscopy)



Sundew



Tuberculosis. Joint and bone tuberculosis. Digestive.

Other similarities between

organ (stomach)

and

plant (Sundew):

Protein digestion

The mixture of the dew like secretion is very similar to the stomach secretion. Protein digestive enzyme. In this gland secretion resides a protein containing ferment of the pepsin type.

Tuberculosis

and

Sundew

Disease of the poor, cachexia

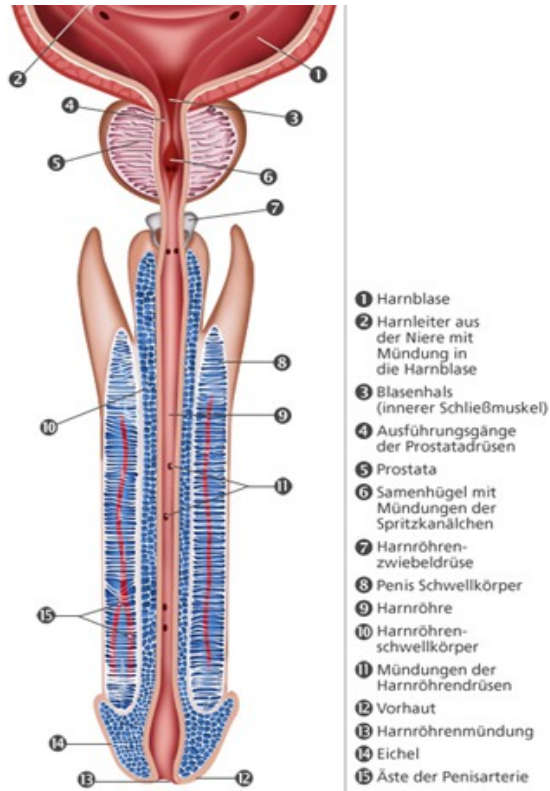
Sundew grows on march/bog, low in nitrogen soil. That is why the plant is an insectivore.



# EQUISETUM HIEMALE

(Rough Horsetail)

Urethra



Equisetum hiemale



Diseases of the urinary tract, kidney stones. Severe bladder pain, which do not improve due to urination. Burning, sharp/stabbing pain in the urethra. Constant urge to urinate. Enuresis. Urinary retention.

Other similarities between

organ (urethra)

and

plant (Equisetum hiemale)

Urinary tract

diuretic

Urination tissue)

at the tips are hydathodes (a type of secretory for increased secrete water through pores.

Urothelium

The name of the horsetail results in being able to the overlapping leaves, which can be extracted and pushed back again.





# EUCALYPTUS GLOBULUS

(Eucalyptus tree)

Ciliated epithelium (Electron microscopy)



Eucalyptus flower



Asthma, bronchitis with plenty (sanious, vile-smelling) excretion.

Other similarities between

organ (ciliated epithelium)

and

plant (Eucalyptus globulus)

Transporting of respirable dust,  
debris, mucus

Drainage of swampy areas, germicidal,  
anti-inflammatory, expectorant,  
supporting exspectoration



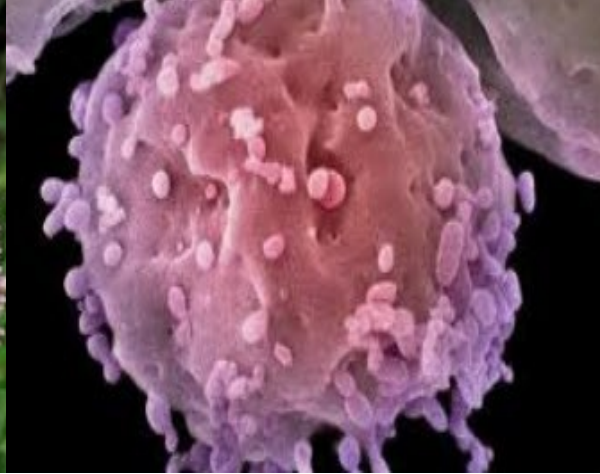
## EUPATORIUM PURPUREUM

(Kidney-root)

Kidney-root



Glomerulus (Elektron microscopy)



Glomerulonephritis, dull pain in the kidney area, burning pain in the bladder and urethra during urination, insufficient urination and constant urge to urinate, even after frequent urination sensation of a full bladder. Irritated bladder. Dysuria during pregnancy.

Penetrating pain, as if the back would break.  
Engrained bone pain. Ischialgia. Rheumatism. Gout.

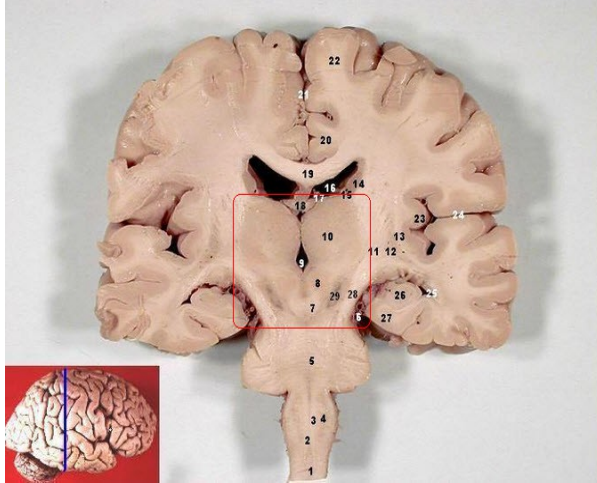




# GINKGO BILOBA

(Maidenhair tree)

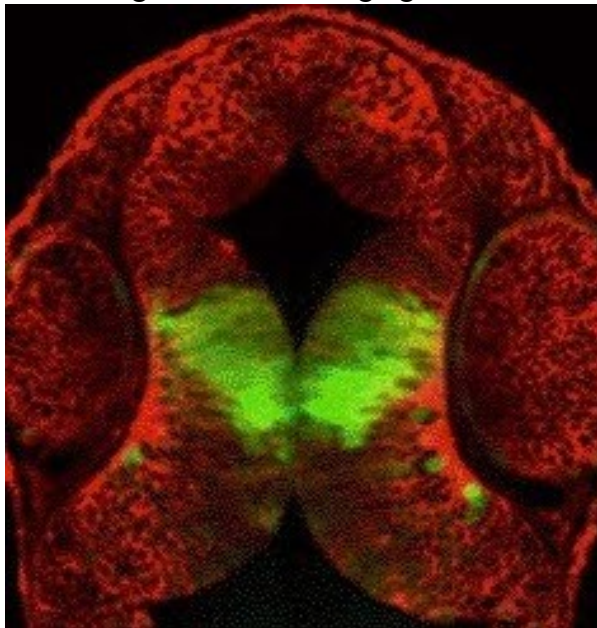
Thalamus (histological section)



Ginkgo leaf



In-vivo high-resolution imaging



Circulatory disorder, concentration disorder, obliviousness (patients do not know what they wanted to say or write, they are angry and dispraise themselves, because they forget it again), mentally impaired. Cerebral and peripheral capillary disorder in vestibulum, arteriosclerosis, insomnia. Ginkgo biloba supports the blood fluidity, mobilizes the flow velocity in the capillaries and activates the oxygen in the brain and extremities (Claudicatio intermittens).

Other similarities between

organ (thalamus)

and

plant (Ginkgo biloba):

GABA (γ-Amino-butyric acid)  
primary inhibitory neurotransmitter  
in the central nervous system  
GABA operates in numerous transactions

fruit smells like butyric acid



in CNS. GABA acts anxiolytic, analgesic, relaxing, anti-convulsive, blood pressure stabilising, sleep stimulating.



## HAMAMELIS VIRGINICA

(Common or American witch-hazel)

Varicosis



Witch -hazel flower



Varicosis, phlebitis, ulcus curis venosum. Venous stasis, painful varices (also the easily bleeding kind). Varices.

Hamamelis acts abstergent, supporting perfusion, anti-inflammatory.

It also reacts on edema due to venous reflux disorder.

Arnica takes more influence on capillaries, Hamamelis more on arteries.

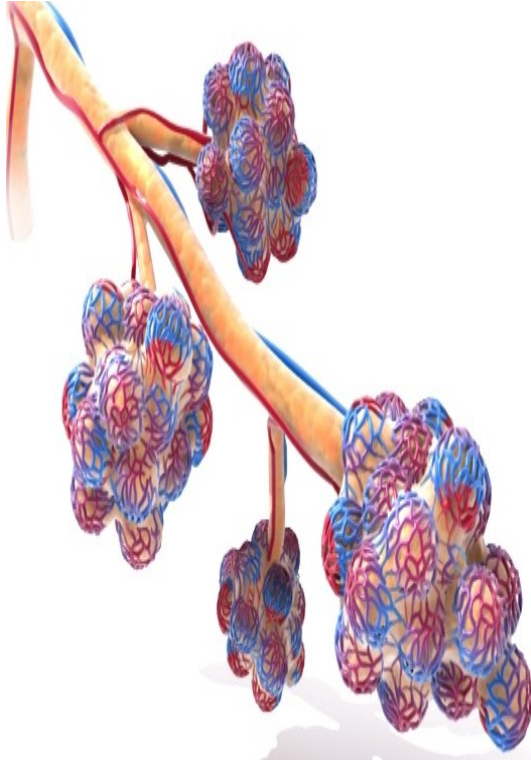
That is why Hamamelis is called “Arnica of the arteries”.



## HEDERA HELIX

(Common ivy)

Alveolus



Ivy flower/berries



Bronchitis, whooping cough, antispasmodic, mucolytic, anti-inflammatory, calming.  
Emphysema, asthma.

Better in fresh air, heat impairs.

Nightly awakening between 3-5 am (lung time on organ clock)

Hyperthyreosis, Graves's disease, struma.

Other similarities between

organ (thyroid)

and

plant (ivy):

Iodine dependent  
blooming

used are the sprouted leaves from the  
plant, because they contain more iodine.

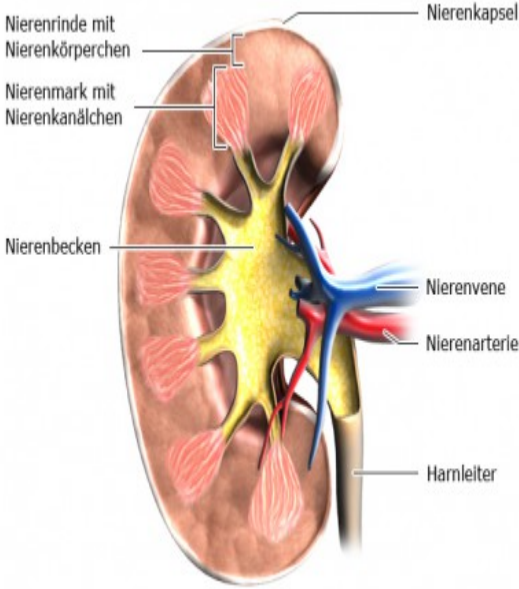




**HERACLEUM MANTEGAZZIANUM SOMM.**

(Hogweed)

Renal pelvis



Längsschnitt Niere

Hogweed



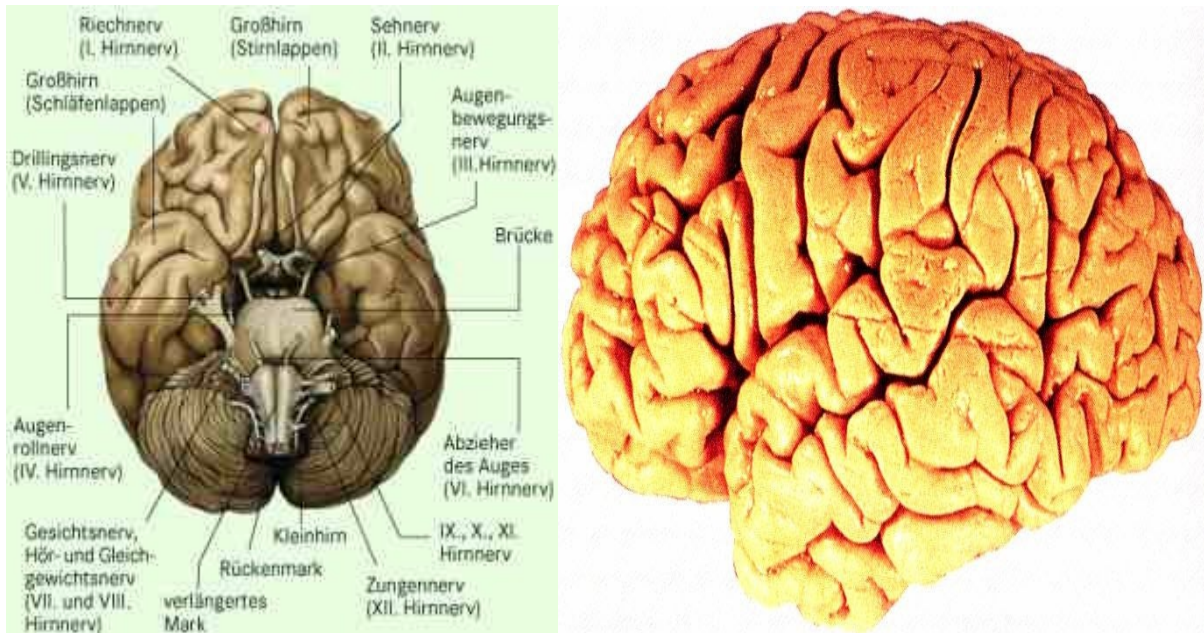
Strangury, also at night, nervous bladder.  
Serenity. Callousness in any relation. Source of danger are not noticed, relentlessly ignored.



## JUGLANS REGIA

(Walnut)

human brain



walnut



deranged, intoxicated, dazed, and affects the mental strength. Feeling, as if one would floating in the air, shooting headache in forehead and occiput with sensation of extension.





## LEONURUS CARDIACA

(Throw-wort/Lion's tail)

Oral cavity



Leonurus cardiaca



Lingua plicata fissurata



Leonurus cardiaca



Fissured tongue, multiple tree-like/branch-like grooves and furrows on a dry tongue with main groove in the middle.

The remedy is also used for numerous heart symptoms like tachycardia, nervous heart symptoms, stinging heart pain, congestive heart, heart spasm, Rhoemheld syndrome, angina pectoris, dyspnea, insomnia.

Calming, anti-spasm, analeptic, anti-flatulent.

Potency used according to Voisin: C 4



# PHASEOLUS NANUS / VULGARIS

(Common bean)

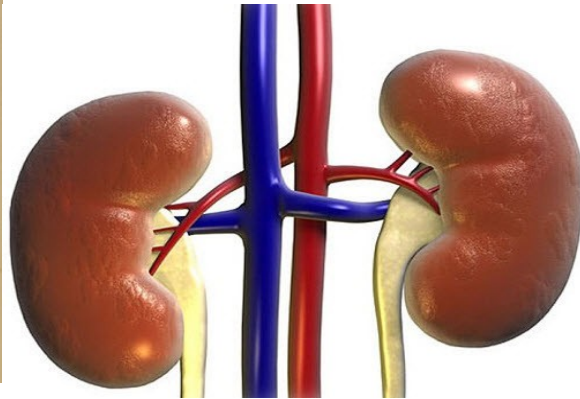
Common bean



Bean



right and left kidney



Crescent shaped, bent fruit.

Diuretic effect, secretory of uric acid and slight lowering of blood pressure.  
Anasarca. Uric acid diathesis, gout. Albuminuria during pregnancy. Kidney disorder.  
Diabetic urine.





## **POLYPORUS PINICOLA**

(Pine Agaric)

Bone tissue (histological



Polyporus pinicola



Acampsia of the back and fingers. Rheumatism.  
Neuralgic headache, pain in the cheekbone.  
Worse during movement, walking, in humid air.



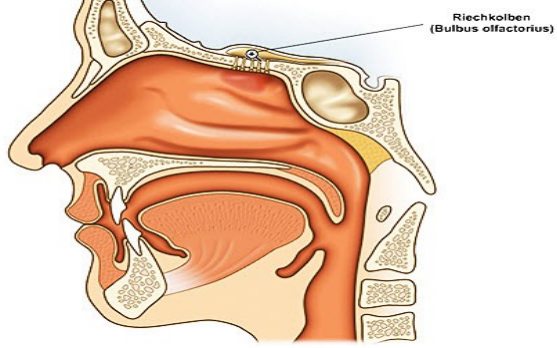
**QUILLAJA SAPONARIA**

(Soapbark)

Fruit Quillaja



Anatomical diagram nose



Acute catarrh. Sneezing.  
Most effective to begin of a cold, very often it will stop further development.



## RICINUS COMMUNIS

(Castor oil plant)

Hemorrhoids (stage 3)



Ricinus communis.



Hemorrhoids. Constipation. Enteritis and chronic diarrhea.

External use with castor oil for danders, scars, age spots and hemorrhoids. It infiltrates inter-cellular gaps and is effective for callus. Against water and water soluble toxins the oil builds a mechanic protective film to heal fissures.

In 1972 it is known, that Ricin blocks the protein synthesis in cells and therefore is used in low dosages against tumor growth.

Other similarities between

organ (heart)

and

plant (Ricinus communis):

Red color

globular, red fruit with hazelnut-like seed



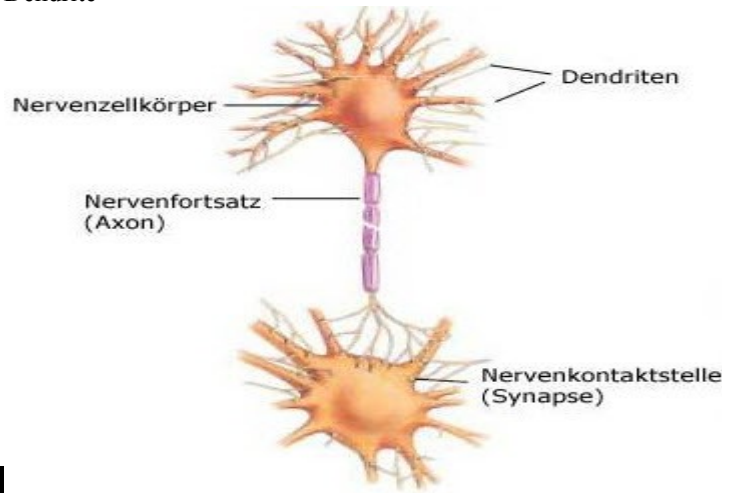
# RUTA GRAVEOLENS

(Rue)

Flower



Dendrite



Besides bone-/ligament-/tendon symptoms, I want to show the relation to the nervous cells.

Glioma.

Neuralgia, facial neuralgia, neuralgic eye pain, sciatic nerve pain, neuralgic bone pain.

Periosteum injury.





## SEMPERVIVUM TECTORUM

(Common houseleek)

Anus (female)



Sempervivum tect.



Anal fissure. Diarrhea. External use for hemorrhoids.

Homeopathic use in low potencies. Close relation to *Sedum acre* (painful hemorrhoids, anorectal cancer) and *Sedum telephinum* (intestinal and rectal bleedings).

Other similarities between

organ (anus)

and

plant (*sempervivum*):

External anus

rosette arrangement of leaves

Anal sphincter

the plant has a constrictive, cooling character



## STICTA PULMONARIA

(lichenized genus of fungi)

Lung



Sticta pulmonaria



Closely related to *Cetraria islandica*, contains similar components.  
Descending cold, allergic diseases of the respiratory tract. Spasmodic cough. Dry mucosa.

Other similarities between

organ (lung)

and

plant (*Sticta pulmonaria*):

Pulmonary lobe

bulgy/palm size lobes



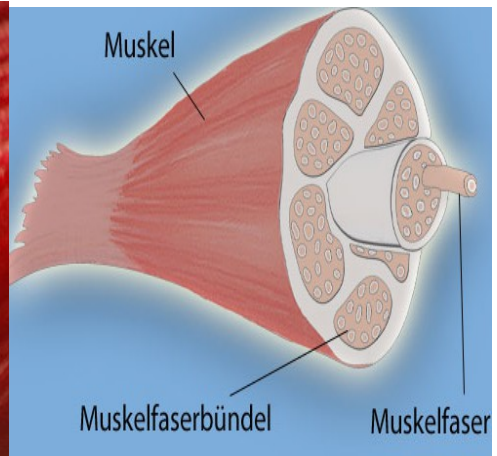
# SWEET POTATO

(Ipomoea batatas)

Musculature



Musle



Sweet Potato

Muscular cramps.

Other similarities between

organ (musculature)

and

plant (Sweet Potato):

Muscle fiber

fibrous structure

Muscular cramps due to deficit of  
Magnesia and Potassium

contains lots of potassium



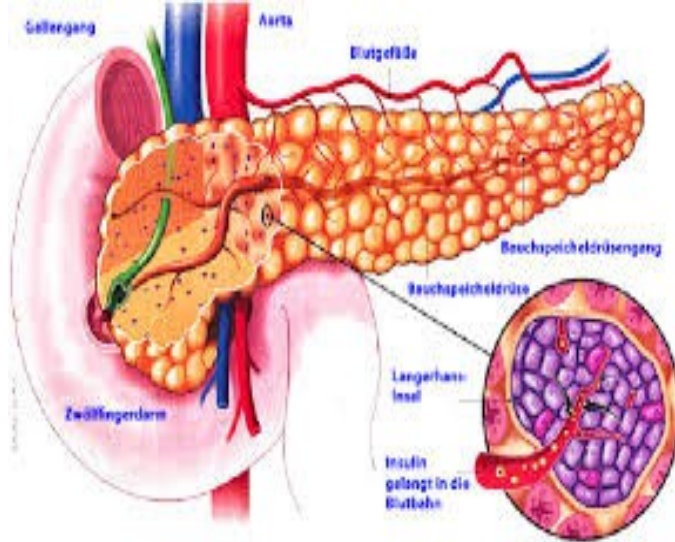


## SYZYGIUM JAMBOLANA

(Brush cherries)

initiated by Mrs. Gabriele Napp.

Pancreas



Infructescence brush cherries



Diabetes mellitus (homeopathic potency D1 and D 2, LM 6), heavy thirst, weakness, cachexia, polyuria. When indicated also diabetic ulcer. According to Boericke also suited for decreasing glucose in the urine.





## THUJA OCCIDENTALIS / ORIENTALIS

(Arborvitae)

Papilloma



Thuja occidentalis



Wart



Thuja orientalis



Warts, papilloma, condyloma, polyps.

Wart-like growth, which are easily burning, itching and bleeding. Thuja warts are big, stemmed, cauliflower-like, cracked, not flat and smooth as with Dulcamara and Sepia. With Causticum they would have a firm body and very horny.



## URTICA URENS / URTICA DIOICA

(Burning nettle and stinging nettle)

Urtikaria



Common nettle seeds/infructescence



Hives. Wheals, with exceeding heavy burning, itching and swelling, locally or on the whole body. (better with rubbing). Itching, burning eczema at the female vulva.

Important symptom: if, after suppressed skin rash rheumatic disorders appear, is *Urtica urens* the right choice as a remedy.



The chert containing pointed hairs of the nettle stem and leaves penetrate like an injection needle into the skin, the with burning liquid filled head burst open and drains the acid-like agent. The small nettle (*Urtica urens*) has even more burning power.

In phytotherapy, *Urtica dioica* is primarily used, in homoeopathy *Urtica urens*.



## INDEX ANATOMIE / CLINICAL DISEASE PATTERN

**ANUS**

**BLADDER**

**BONES**

**BORRELIOSIS**

**BRAIN**

**CILIATED EPITHELIUM**

EUCALYPTUS GLOBULUS

**DIABETES**

**DIGESTION**

**EYE**

**GALLENBLADDER**

CARDUUS MARIANUS

CHELIDONIUM MAJUS

**HEART**

**HEART VALVE**

ADONIS VERNALIS

DIGITALIS PURPUREA

**HEMORRHOIDS**

**INTESTINE**

AILANTHUS GLANDULOSA

CACTUS GRANDIFLORUS

**KIDNEY**

ASARUM EUROPAEUM

EUPATORIUM PURPUREUM

HERACLEUM MANTEGAZZIANUM SOMM.

PHASEOLUS NANUS / VULGARIS

**KUPFFER CELLS**

**LIVER**

**LUNG**

CETRARIA ISLANDICA



EUCALYPTUS GLOBULUS

HEDERA HELIX

STICTA PULMONARIA

**MIKROVILLI INTESTINE**

**MUSCULATURE**

**OVARY**

**POLYP**

**PROSTATE**

**SKIN**

THUJA OCCIDENTALIS / ORIENTALIS

URTICA URENS / URTICA DIOICA

**STINGING PAIN**

BERBERIS AQUIFOLIA ET VULGARIS

**SYPHILLIS**

**THALAMUS**

**TONG**

**THYROID**

**TUBERCULOSIS**

**URETHRA**

**URTICARIA**

**VASCULATURE**

CLEMATIS RECTA

CONIUM MACULATUM

HAMEMELIS VIRGINICA

**VERTEBRA**





## REFERENCE

1. Allamy.com
2. Allum.de
3. Anatomie-physiologie.de
4. Baumkujnde.de
5. Bilder-der-natur.de
6. Biotechnologie.de
7. Biowin.at
8. Blob.herrenkampergaerten.de
9. Boericke, William – Handbuch der homöopathischen Materia Medica
10. Botanicalgarden.ubc.ca
11. Breast.de
12. Cactusjungle.com
13. Chariete.de
14. Clarke, John – Der neue Clarke, Enzyklopädie
15. Commons.wikimedia.org
16. Courses.washington.edu
17. Ct-botanical-society.org
18. De.123rf.com
19. De.academic.ru
20. Die-gruene-speisekammer.de
21. Die-honigmacher.de
22. Doccheck.com
23. Doc-stock.com
24. Drkennypang.com
25. Dr-leber.de
26. Dw.de
27. Dwpicture.com.au
28. Dwyer, John “Krieg im Körper“
29. Edumorph.blogspot.com
30. Endoskopischer-atlas.de
31. Eharrison.de
32. F1online.de
33. Footage.framepool.com
34. Fotocommunity.com
35. Fotosearch.de
36. Gardensonline.com.au
37. Gartencenter.co.at
38. Gefaesszentrum-bremen.de
39. Greenisland33.ru
40. Gesundheitsinformation.de
41. Gomeal.de
42. Hamsterkiste.de
43. Hank-dust.com
44. Harrison Innere Medizin 18. Auflage ABW Wissenschaftsverlag
45. Heilberufe-ausbildung.de
46. Hilferich, Gerad “Humboldt’s Cosmos”
47. Hmts.de
48. Hxbenefit.com



49. Itg.kit.edu
50. Imgarcade.com
51. Internetmedicin.se
52. Internisten-im-netz.de
53. Istockphoto.com
54. Kessler, Wolf-Dieter “Dr. Kessler’s Homöopathie Buch”  
<http://www.dr-kessler.com/dr-kessler-s-homeopathie-buch-der-polycreste-und-anderer-wichtiger-mittel-mit-index-der-krankheiten/>
55. Kbwn.de
56. Lexikon-alternativ-heilen.de
57. Livingafeld.com
58. Lungenliga.ch
59. Mdr.de/brisan
60. Medicalgrapevineasia.com
61. Medicalgraphics.de
62. Mein-naturfoto.de
63. Mezger, Julius “Gesichtete homöopathische Arzneimittellehre“
64. Mikroskopie-forum.de
65. Mh-hannover.de
66. Myheimat.de
67. Naturschutzgruppe-wietzendorf.de
68. Neurolabor.de
69. Njms.umdj.edu
70. Phmi.uni-mainz.de
71. Paghat.com
72. Pflanzen-bilder-kaufen.de
73. Pictures.doccheck.com
74. Planet-schule.de
75. Polartwist.de
76. Prof-Guenther.de
77. Prostatahilfe.ch
78. Onlyfoods.net
79. Okej.de
80. Schule-bw.de
81. Sciencephoto.com (Science Photo Library)
82. Selbsthilfe-lot.at
83. Shandon.de
84. Static.cosmiq.de
85. Süss-kartoffeln.de
86. Sunshine-seeds.de
87. Telegraph.co.uk.
88. Terrapie.de
89. Tk-logo.de
90. Trickstar.files.wordpress.com
91. Tuberculosis.net
92. Tv.doccheck.com
93. Upload.wikimedia.org
94. Vonarburg, Bruno “Homöotanik”
95. Warzen-leberfleck-entferner.com
96. Wellgrowhorti.com
97. Wikimedia.org
98. Wikipedia



- 99. [Wisageek.com](http://Wisageek.com)
- 100. [Youtube.com](http://Youtube.com) - bile reflex gastritis
- 101. [Zauberstaude.de](http://Zauberstaude.de)
- 102. [Ziegen-caprine.ch](http://Ziegen-caprine.ch)
- 103. [Zentrum-der-gesundheit.de](http://Zentrum-der-gesundheit.de)

